

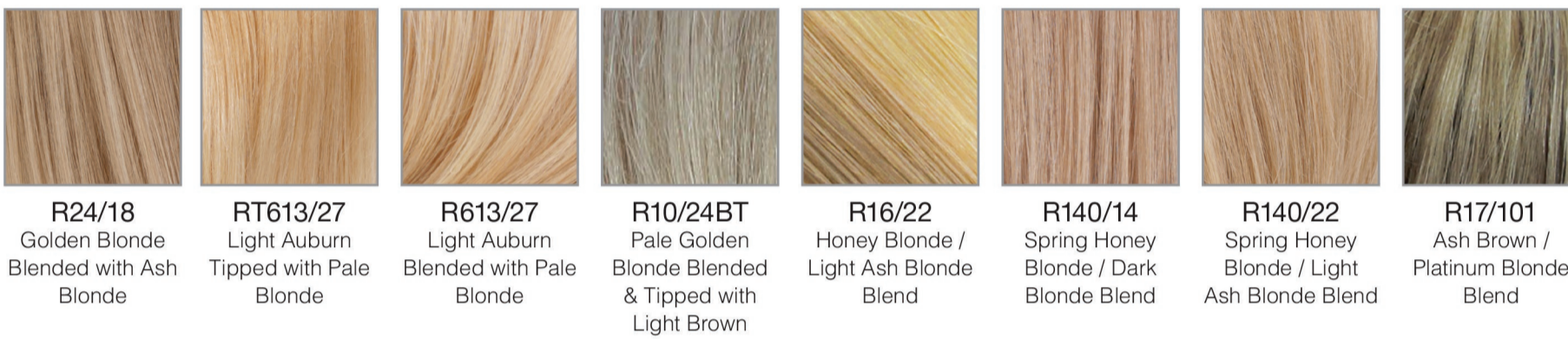
UNDERSTANDING THE COLOR GUIDE

- [BT] BLENDED TIP : Top half of base color blended & tipped to bottom half of highlight.
- [CH] CHUNKY HIGHLIGHT : Side by side streaks of contrasting colors.
- [RT] ROOTED : Natural base color at the root.
- [T] TIPPED : Dark base tipped with highlighted ends.

BROWNS



BLONDES



REDS



HIGHLIGHTS



GRAYS



ROOTED

